



## BARGE RELOCATION TOW - BRISBANE TO SKARDON RIVER

### Scope of work

July 2023

Client: TSA (Transshipment Services Australia)

North Marine was engaged to conduct an urgent tow of a 70.3-meter cargo barge from the Port of Brisbane to Skardon River, via Cairns.

The 1750-nautical-mile encumbered tow required a pre-tow survey, coastal pilotage & multi-port stops. Planning and coordination with regulatory bodies, marine surveyors, insurance agents, pilot companies and the client were critical to a successful and efficient operation. North Marine engaged local 3rd party workboats to assist with the outbound transit through the Port of Brisbane. The tow was completed safely and without incident, despite challenging operating conditions.



Visit case study page on  
barge tow from  
Brisbane to Skardon River

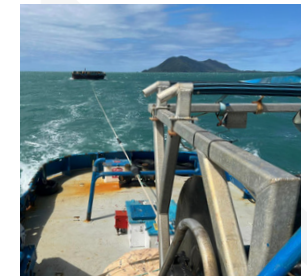
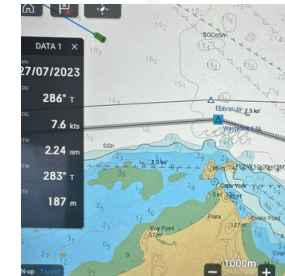


### Discriminators

- Expert regional knowledge, highly experienced at towing through the Great Barrier Reef & delivering value for money
- Hold necessary operational permits
- Established stakeholder relationships inc. AMSA, GBRMPA, Reef VTS, Pilots, Marine Surveyors & Insurance Agents
- A fleet of suitable towage vessels to perform works
- Local SME business with local workforce & QLD premises
- Adept at delivering logistically complex projects
- ISO accredited, knowledgeable management & key personnel

### Outcome

North Marine successfully completed the contract with project requirements delivered in full, on time & on budget.



0421 822 661 or 0417 933 180

info@northmarine.com.au



northmarine.com.au



ACN 634 263 460



Marine Facility · Cairns Port  
North Wharf, 71 Lee Yan Rd, East Trinity QLD 4871



Headquarters · 13 Franzmann St, Cairns, QLD 4870