

BATHYMETRIC SURVEY & SITE ASSESSMENTS - PACIFIC

► Scope of work

Client: Undisclosed due to NDA

May 2022

North Marine was contracted to conduct bathymetric surveys & site assessments on 4 proposed marine infrastructure locations in the Pacific

As mooring infrastructure experts, North Marine consultants flew internationally to determine suitable locations to install the marine infrastructure. Comprehensive reports of the four reef sites were provided to the client. Our seafloor surveys cover bathymetric imaging analysis, Met Ocean Data, seasonal weather considerations, marine fauna, mooring/anchoring options & resources available (e.g. availability of vessels & nearby Port logistics). A Bathymetric Surveyor & Naval Architect are specialised subcontractors to NM on this project.



Visit case study page on
bathymetric survey &
site assessments in Pacific

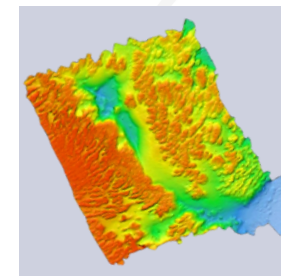
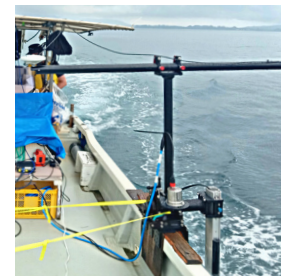


► Discriminators

- Adept at delivering logistically complex & remote projects
- Most experienced reef pontoon installation company in Australia
- Environmentally & socially aware, established at operating in environmental & culturally sensitive habitats
- Exemplary communication with stakeholders, Authorities & subcontractors
- ISO accredited, experienced management & key personnel

► Outcome

North Marine successfully completed the site assessments with all objectives delivered in full, on time and within budget. The best outcome for the client was achieved.



☎ 0421 822 661 or 0417 933 180

🌐 northmarine.com.au

📍 Marine Facility · Cairns Port
North Wharf, 71 Lee Yan Rd, East Trinity QLD 4871

✉ info@northmarine.com.au

🏢 ACN 634 263 460

📍 Headquarters · 13 Franzmann St, Cairns, QLD 4870